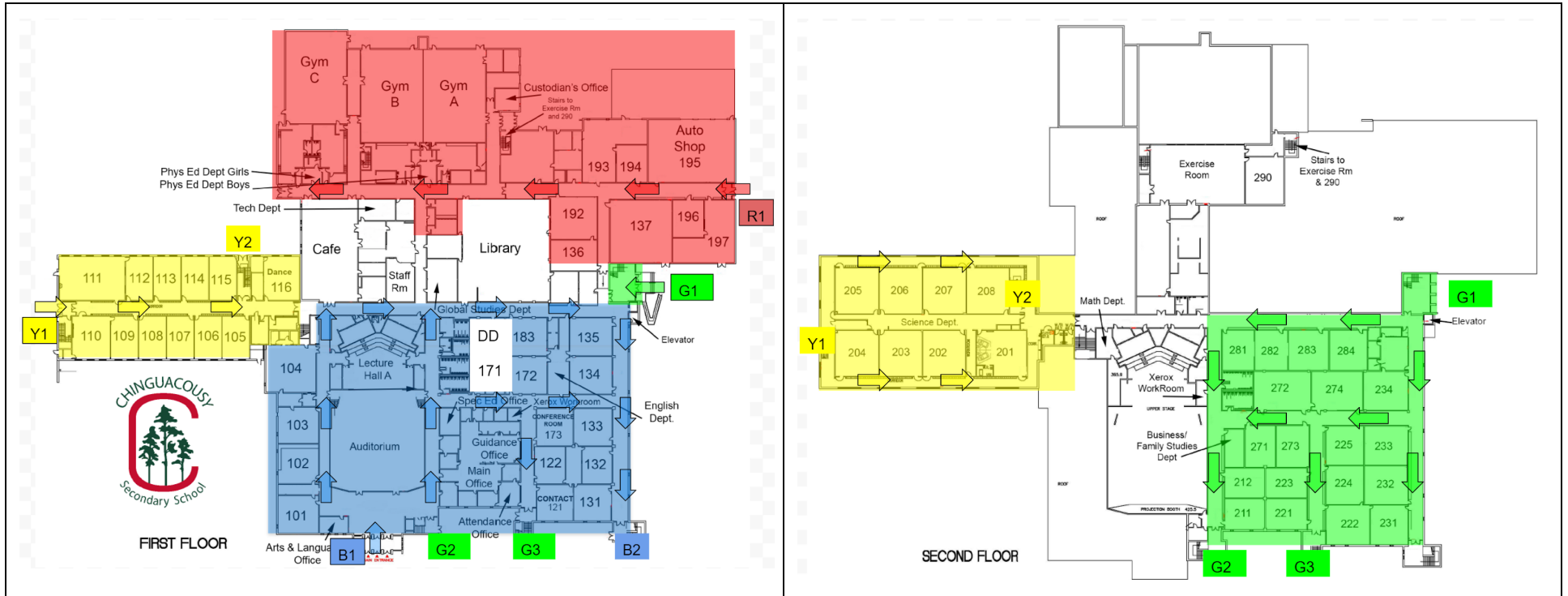


Chinguacousy SS - Entry and Exit plan, 2020/2021 - All Hallway arrows must be followed for ENTRY into the building at start of day.



All classes in Yellow area ENTER "Y1" Door and follow arrows during entry between 7:45 am - 8:00 am.
 Classes dismissed and EXIT through Door "Y1": 107, 108, 109, 110, 111, 112, 113, 203, 204, 205, 206
 Classes dismissed and EXIT through Door "Y2": 105, 106, 114, 115, 116, 201, 202, 207, 208

All classes in Red area ENTER "R1" Door and follow arrows during entry between 7:45 am - 8:00 am.
 Classes dismissed and EXIT through Door "R1": Gym A, B, C, Weight Room, 136, 137, 192, 193, 194, 195, 196, 197

All classes in Blue area ENTER "B1" Door and follow arrows during entry between 7:45 am - 8:00 am.
 Classes dismissed and EXIT through Door "B1": 101, 102, 103, 104, 121, 122, 183
 Classes dismissed and EXIT through Door "B2": 131, 132, 133, 134, 135, 172
 NOTE: Students in DD Program in Room 171 will continue to meet outside Door G1 and be escorted by their teacher to class

All classes in Green area ENTER "G1" Door and follow arrows during entry between 7:45 am - 8:00 am.
 Classes dismissed and EXIT through Door "G1": 231, 232, 233, 234, 284
 Classes dismissed and EXIT through Door "G2": 211, 212, 281, 282, 283
 Classes dismissed and EXIT through Door "G3": 221, 222, 223, 224, 225, 271, 272, 273, 274